



## NXBLE-125 Residual current operated circuit breaker (CBR)

### 1. Compliant standards

IEC/EN60947-2

### 2. Compliant certification

CE

### 3. Major function

Overload protection, short circuit protection, isolation, residual current operation

### 4. Technical parameters

Rated current: 63, 80, 100 (1P+N, 2P, 3P, 3P+N, 4P), 125 (1P+N, 2P);

Rated residual operating current: 0.03A, 0.05A, 0.075A, 0.1A, 0.3A;

Rated voltage: 230V ~ (1P+N, 2P), 400V ~ (3P, 3P+N, 4P);

Frequency: 50Hz;

Electromagnetic release type: C, D;

Number of poles: 1P+N, 2P, 3P, 3P+N, 4P;

Mechanical life: 20000 cycles;

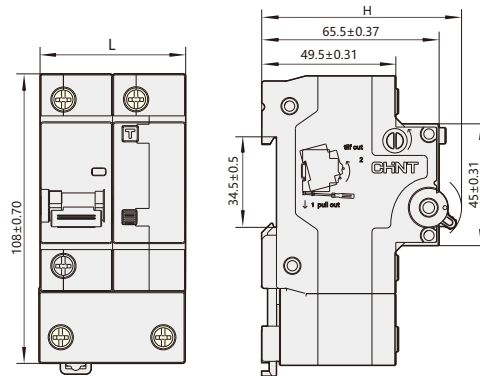
Electrical life: 6000 cycles ( $I_n \leq 100A$ ); 4000 cycles ( $I_n > 100A$ );

Rated short-circuit breaking capacity( $I_{cu}$ ): 10000A;

Short-circuit breaking capacity( $I_{cs}$ ): 7500A;

Rated impulse withstand voltage( $U_{imp}$ ): 4kV.

### 5. Dimensions and installation sizes



	1P+N	2P	3P	4P
L(mm)	54 <sup>0</sup> <sub>0.74</sub>	81 <sup>0</sup> <sub>0.87</sub>	108 <sup>0</sup> <sub>1.40</sub>	135 <sup>0</sup> <sub>1.60</sub>
H(mm)	75.5 <sup>0</sup> <sub>1.20</sub>	78.5 <sup>0</sup> <sub>1.20</sub>	78.5 <sup>0</sup> <sub>1.20</sub>	78.5 <sup>0</sup> <sub>1.20</sub>